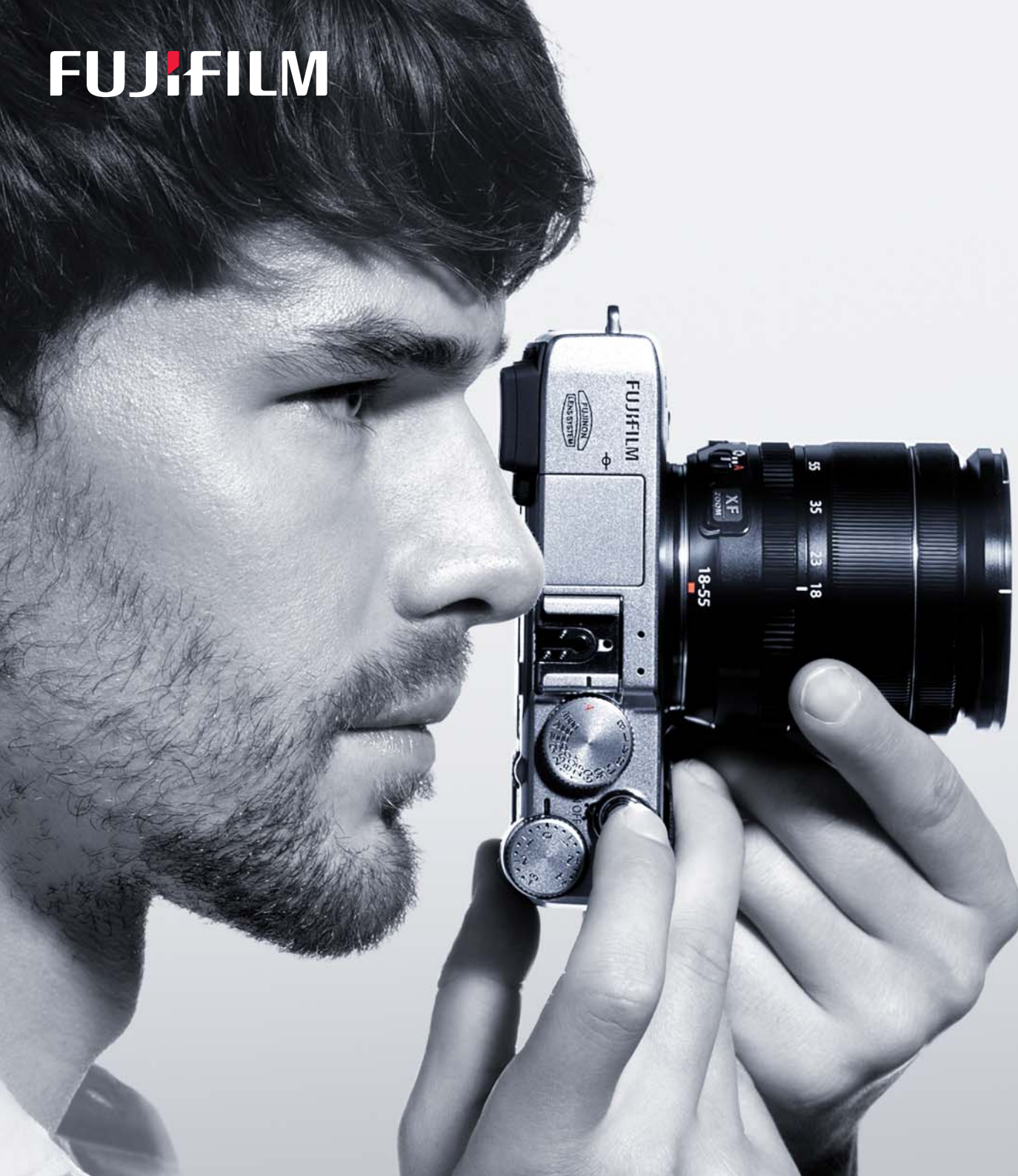


FUJIFILM



X-E2



X Evolution.

Even faster so the moment cannot escape.

World's fastest auto focus speed of 0.08 sec.*
achieved by Fujifilm's unique phase detection AF system.

Even more beautiful color reproduction and even higher definition image capture.

The ultimate sensor, APS-C 16M X-Trans CMOS II.

Even more enjoyment of photography.

Controls and responses that seem even more intuitive with every shot,
and simple-to-use Wi-Fi that lets you share each special moment on the spot.

* Fastest AF speed among digital cameras equipped with a 4/3-inch or larger sensor. Measurement conducted by Fujifilm research based on CIPA guidelines using the X-E2 equipped with XF14mmF2.8 R lens in High Performance mode as of September 2013.

Only one camera has evolved
enough to bring you all this and more.

X-E2





X-E2•XF23mmF1.4 R•F5.6•1/240sec. •ISO400

World's fastest AF speed of 0.08 sec.*¹ achieved via the integration of phase detection pixels into the advanced sensor.

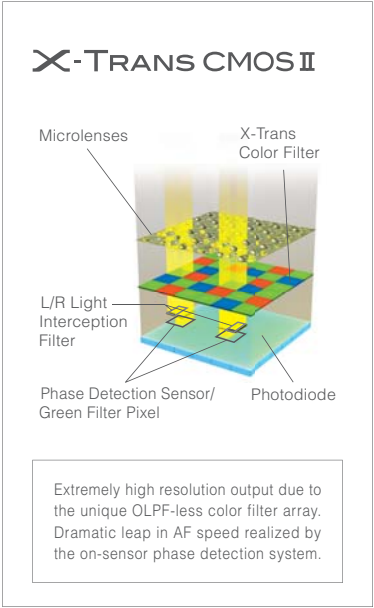
High-speed responses from the on-sensor phase detection AF system. Accurate focusing in dark scenes that only contrast AF can deliver. The X-E2 has both, plus Intelligent Hybrid AF for automatic switching to the optimal focusing system for the scene and conditions. A newly developed algorithm improves AF accuracy when shooting low-contrast subjects and dark scenes. The evolved AF system of the X-E2 brings your subject into sharp focus so quickly that priceless moments will never escape your lens.

Instant responses that capture every imaginable moment beautifully. Even in burst shooting, the X-E2's high-speed AF tracks the subject with precision.

The adoption of the dual CPU and improved computational performance has doubled the processing speed when compared with the previous generation processor*², the start-up time has also improved to only approx. 0.5 sec.*³. Working in tandem with the high-speed signal readout of the X-Trans CMOS II sensor, the processor reduces the shooting interval to 0.5 sec.*⁴ and shutter time lag to 0.05 sec., raises the maximum continuous shooting speed to 7fps (max. 28 frames)*⁵, and achieves a maximum continuous shooting speed of 3fps with AF tracking.

<u>AF Speed</u>	0.08 sec.* ¹	<u>Start-up time</u>	0.5 sec.* ³	<u>Shooting interval</u>	0.5 sec.* ⁴	<u>Shutter time lag</u>	0.05 sec.
-----------------	--------------------------------	----------------------	-------------------------------	--------------------------	-------------------------------	-------------------------	------------------

*1 Fastest AF speed among digital cameras equipped with a 4/3-inch or larger sensor. Measurement conducted by Fujifilm research based on CIPA guidelines using the X-E2 equipped with XF14mmF2.8 R lens in High Performance mode as of September 2013. *2 Compared with the EXR Processor Pro. *3 Equipped with XF27mmF2.8 in High Performance mode. *4 MF mode. *5 JPEG format, Fujifilm testing standard: class 10 SD card with XF35mmF1.4 R lens mounted.



X-E2•XF23mmF1.4 R•F1.4•1/950sec. •ISO200

Enhanced Continuous AF performance expands its ease of use.

Even while the shutter button is half-pressed, the AF continues to focus on the targeted subject. You can also change the settings and use the Focus Lock as before. Enhanced performance also lets you select the position of the focus target mark (Area Selection). Continuous shooting with AF tracking is also possible with the subject motion predictive AF (in Low-speed Continuous Shooting Mode with the auto focus set to AF-C).

Neither the subject nor the moment will escape you, whatever you're shooting. High-speed responses and intuitive image capture.





X-E2•XF14mmF2.8 R•F8•1/450sec. •ISO200

X-Trans CMOS II & EXR Processor II

Harnessing the full potential of each lens to capture breathtaking quality in every image.

X-Trans CMOS II for unmatched color reproduction.

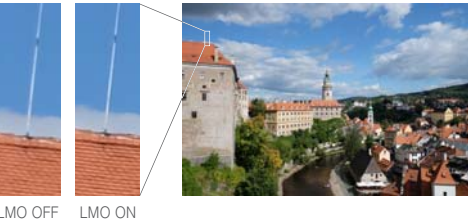
X-Trans CMOS II incorporates an original color filter array with a high aperiodicity (highly randomized) pixel arrangement. Compared with conventional sensors which employ an optical low-pass filter (OLPF) to minimize moiré at the expense of resolution, Fujifilm's unique X-Trans CMOS II array eliminates the need for an OLPF, enabling the sensor to capture unfiltered light from the lens for an unprecedented level of resolution. Other outstanding features include the large APS-C size sensor's ability to create big, beautiful bokeh effects, and the naturally vibrant colors that only Fujifilm's 80-year quest for the ultimate in color reproduction as a photo film manufacturer can capture.



Lens Modulation Optimizer technology brings out the full potential of the XF lens.

The advanced Lens Modulation Optimizer (LMO) technology in the X-E2 was made possible by the integrated development of the lens, sensor and processor. For each mounted lens, LMO high-precision processing of the lens focal length and aperture, as well as data from the screen center to the edges, corrects diffraction blur when shooting with a stopped down aperture and compensates for the slight blurring in the lens periphery. The result is edge-to-edge image quality with incredible sharpness and a sense of dimensional reality. Compatible with the entire XF lens lineup, LMO delivers superb definition with every lens change. Photographers have the option to switch the LMO function ON/OFF depending on their preference.

© Lens firmware update required.



X-E2•XF18-55mmF2.8-4 R LM OIS•F3.6•1/56sec. •ISO6400

Shoot at high ISO6400 sensitivity with amazingly low noise.

The unique color filter array of the X-Trans CMOS II sensor also contributes to improved noise separation when shooting at high sensitivity settings. The high S/N ratio output from the advanced EXR Processor II further enhances the image quality. Delivering high sensitivity processing performance and noise reduction with minimal chromatic blur, the X-Trans array is the key to image quality far beyond its sensor size. This extreme performance allows photographers to extend their everyday high sensitivity range up to ISO6400 and capture high quality images with reduced camera shake and subject motion blur.





Your confidence will grow with every shot. Intuitive dial operation makes the camera an extension of your vision.

When you hold the camera for a shot, your left hand naturally controls the Aperture Ring and your right comfortably finds the Shutter Speed Dial. Everything is ideally positioned so you can concentrate on composing your shot. You are in complete control with a choice of aperture priority AE, shutter speed priority AE, program AE and manual exposure control. With your right thumb, you control the ± 3.0 EV range of the exposure compensation dial in 1/3EV steps with a satisfying "click" sensation as it firmly snaps into each position.

Redesigned shooting menu and settings for streamlined operation.

Press the "Q" (quick menu) button on the back for instant access to ISO Sensitivity, Film Simulation and other Shooting Menu options. Just use the Selector and Command Dial to adjust your settings, even while shooting. You also have the freedom to customize your interface by assigning ISO Sensitivity, White Balance, Exposure Metering, AF Area Selection or other frequently used functions to 4 different buttons.



Original "one touch" wireless transfer to your smartphone or PC lets you share high image quality on the spot.

Effortless wireless transfer of photos to your smartphone or smart tablet. Just download the free dedicated "FUJIFILM Camera Application" to your mobile device. There is no need to enter an ID, password or to change other troublesome settings. With just a touch of a button, you can transfer your high-quality images to your phone or tablet ready to upload to your blog or social networking site. You can also use the X-E2's built-in Wi-Fi to save your photos to your PC.



Natural field of vision lets you concentrate on framing the shot. High-definition electronic viewfinder with approx. 2.36 megadots of resolution. Vivid display of the image and data on the 3-inch, 1.04-megadot LCD monitor.

With 100% coverage and an approx. 2.36-million dot resolution, the OLED electronic viewfinder adopts an optical structure of two glass lenses and a double aspherical lens for a comfortable and natural view of the entire scene with a horizontal apparent field of view of 25°. On the back of X-E2, the large 3.0-inch, 1,040,000-dot LCD monitor displays shooting information and the image with superb brightness and clarity. Even in dark scenes, the displayed image is easy to see. Adoption of special reinforced glass not only protects the screen from scratches, but also reduces reflections for improved viewing comfort.



X Mount Lens - the product of integrated lens & sensor development with original digital technology.

Every new addition to the expanding line-up is a gem of optical excellence.

Every facet of the development and design of Fujifilm's original X Mount began with a clean slate. The result was the marriage of high-precision optical engineering with the latest digital technology. From the acclaimed high resolution XF lens series to the compact portability of the XC lens series, each lens exploits the full potential of the X Mount's descriptive performance.



M Mount adapter breathes new life into classic lenses of the past.

The M Mount adapter lets you use an incredibly wide selection of lenses with the X-E2 camera body. Fully compatible with the M Mount lens standard, the adapter is designed to maintain a flange back distance of 27.8mm with a high degree of planarity and precision.

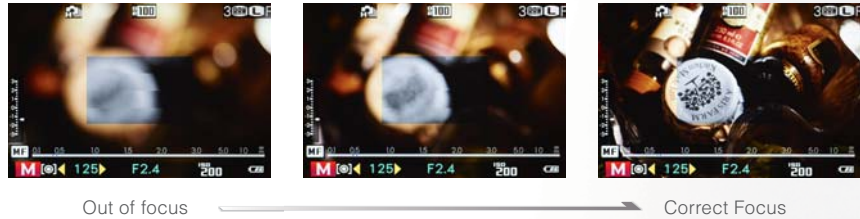


Digital Split Image™ supports manual focusing of legacy lenses.

Pin-sharp manual focus using the X-Trans CMOS II phase detection system.

Digital Split Image™ helps you manually focus your shot with greater precision. Simply adjust the focus to line up the four stripes displayed in the central part of the live view and match up the left and right split images for pinsharp focus.

Digital Split Image™ display available on the LCD monitor or in the EVF.



XF LENS

Exceptional resolution from the center to the periphery of the image. The maximum aperture diameter possible for a brighter, faster lens. XF Lenses are the crystallization of Fujifilm's optical technology and uncompromising commitment to image quality.

Single-focal Length Lenses

Wide Angle Lens **NEW** XF23mmF1.4 R

The combination of the bright maximum aperture of F1.4 and 35mm* angle of view makes this lens suitable for a wide range of applications including everyday snapshot photography.



X-Pro1•XF23mmF1.4 R•F1.4-1/160sec. •ISO1600

Wide Angle Lens **NEW** XF27mmF2.8

Depicting scenes with extreme clarity and brightness, this compact, lightweight lens with a focal length of 41mm* – about the same angle of view of the human eye, performs well in a variety of scenes.



X-M1•XF27mmF2.8•F5.1/1000sec. •ISO200

Ultra Wide Angle Lens XF14mmF2.8 R

For capturing images rich in perspective, this ultra wide-angle 21mm* single focal length lens is ideal for powerful landscape and architectural photos.



X-E1•XF14mmF2.8 R•F14-10sec. •ISO200/ Randall Cilpriano (Philippines)

Wide Angle Lens XF18mmF2 R

With its high resolution F2 aperture and maintenance of ample light in the image periphery, this lens is a pleasure to use for a wide range of photography; from landscapes to snapshots.



X-E1•XF18mmF2 R•F2.8-1/140sec. •ISO6400/ Tomasz Lazar (Poland)

Large Aperture Standard Lens XF35mmF1.4 R

Capturing the "in focus" plane with high resolution clarity while rendering the out-of-focus image areas with a beautiful creamy blur, this standard lens lets you express a photo rich in perspective and presence.



X-Pro1•XF35mmF1.4 R•F1.4-1/500sec. •ISO320/ Rommel Bundalian (Philippines)

Mid Telephoto Lens XF60mmF2.4 R Macro

The bright F2.4 aperture and optical design that minimizes chromatic aberration deliver both fine photographic description and beautiful defocused effects.



X-E1•XF60mmF2.4 R Macro•F10-1/125sec. •ISO200/ Niko Villegas (Philippines)

Zoom Lenses

Standard Zoom Lens XF18-55mmF2.8-4 R LM OIS

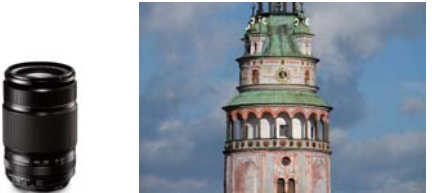
Covering the focal length range from a wide angle 27mm* to a medium telephoto 84mm*, this versatile zoom boasts built-in image stabilization and a fast linear motor-driven autofocus for nimble high-speed AF performance.



X-Pro1•XF18-55mmF2.8-4 R LM OIS•F3.6-1/500sec. •ISO200/ Bert Stephani (Belgium)

Telephoto Zoom Lens **NEW** XF55-200mmF3.5-4.8 R LM OIS

With high-speed linear motor-driven AF performance and a built-in image stabilization function equivalent to 4.5 stops* of shutter speed, this is the essential zoom for your lens arsenal.



X-E2•XF55-200mmF3.5-4.8 R LM OIS•F9-1/640sec. •ISO200

XC LENS

Bright XC lenses, with crisp clarity and the comfort and convenience of compact portability. Every lens change reveals a new world of photographic possibilities.

Zoom Lenses

Standard Zoom Lens **NEW** XC16-50mmF3.5-5.6 OIS

Covering a wide focal length range, this compact zoom supported by built-in image stabilization captures not only superb stills but also stunning movies.



X-M1 XC16-50mmF3.5-5.6 OIS F5.6 1/300sec. ISO400

Telephoto Zoom Lens **NEW** XC50-230mmF4.5-6.7 OIS

With a maximum telephoto reach of 350mm*, this long zoom features minimized chromatic aberrations and built-in image stabilization for sharp depiction.



X-M1 XC50-230mmF4.5-6.7 OIS F8 1/200sec. ISO800

From the build quality of the body to the precision-machined metal dials, Fujifilm's X series design bursts with the love of photography.

X Accessories enhance both the beauty and mobility of the X-E2 experience.



Metal dials for a quality experience - from design to operation

The shutter speed and exposure compensation dials are precision milled from solid metal blocks. The knurled finish, "just-the-right" torque resistance and the satisfying "click" at each step ensure smooth, confident operation.



Lightweight yet strong die-cast magnesium body

The choice of die-cast magnesium for the top cover and body produces a high-degree of strength without a weight penalty. It has also facilitated the contours of X-E2's beautiful curved surfaces. Finished in a steel-like sheen and specially coated, the body impresses and has an air of authority.



Leather-like finish for the lasting look of quality

Compared with real leather, synthetic leather promises the practicality of resistance to the elements and higher durability, while an original manufacturing process produces a texture with the look and feel of authentic leather. Together the material and unique texture provide a reassuring and comfortable non-slip grip for the X-E2.



Body in classic silver or discreet black

Adding a touch of elegance and the steely sheen of quality, the classic black & silver X-E2. Inconspicuous in the street and ideal for candid reportage-style shooting, the cool black X-E2. The choice is yours.



"MADE IN JAPAN"

Each and every part of this camera has been made in Japan using top quality components and high precision engineering. You are guaranteed Fujifilm's highest quality standards.



Shoe Mount Flash EF-42



Shoe Mount Flash EF-20



Body Cap BCP-001



Remote Release RR-90



Protector Filter
PRF-39 ø39 PRF-52 ø52 PRF-58 ø58 PRF-62 ø62

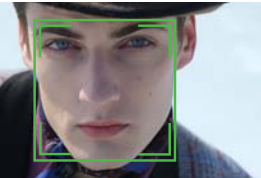


X-E2 Evolution: Impact on Shooting & Playback Functions

【 Face Detection function 】

Take portraits and group photos with confidence.

With Face Detection ON, faces in the scenes are instantly detected, and the focus, exposure and white balance are automatically optimized.



【 Built-in Flash 】

Super Intelligent Flash

Adopting Fujifilm's original TTL automatic flash control technology, the built-in high-precision flash system automatically supplements lighting with just the right amount of flash when shooting small items, capturing special occasions indoors or in other low-light scenes. When even more light is required or you are shooting with the lens hood attached, you can use a separately sold TTL flash.



【 Focus Peak Highlight 】

Handy assistance for more accurate manual focusing.

The highlighted outline of high contrast areas of the subject provide a helpful aid for manual focusing. While monitoring the peaking lines, just rotate the focus ring to smoothly fine tune the focus.



【 Film Simulation 】

Impress with Fujifilm's signature color expression with the X-E2's Film Simulation modes.

From the dramatic tonality and vivid colors of Velvia to the distinctive color profile of ASTIA that can deliver both natural skin tones and vibrant landscapes, Film Simulation features a selection of 10 different film modes. A simple description of the film profile is displayed for each selected mode.



【 PROVIA/STANDARD 】



【 Velvia/VIVID 】



【 ASTIA/SOFT 】



【 MONOCHROME 】



【 SEPIA 】

【 Full HD Movie Shooting 】

Shoot HD Movies with expanded freedom of function and control.



Improved performance lets you capture the action in Full HD movies (1920 x 1080) with exactly the look and style you imagine. Select a Film Simulation mode for a distinctive quality of color. You can even make exposure compensation adjustments (± 2.0 EV) while recording. In addition to enhanced noise reduction performance and sharpness, the X-E2 lets you switch from 30fps to 60fps and record at higher bit rates (24Mbps or higher) so you can shoot movies with even higher image quality.

Enhanced Auto Focus Performance

Experience the leap in AF tracking performance while shooting movies. In addition to improved speed, accuracy and smoothness of focusing, the X-E2 nimbly tracks the subject in a variety of scenes whether panning or zooming, closing or opening the distance, or even if something briefly comes between you and the subject.

【 Advanced Filter 】

For photos with a bit of a different look, just select Advanced Filter with the DRIVE button and take your pick. Once a filter is selected, you can use Program AE, Aperture Priority AE, Shutter Priority AE, and manual exposure mode, as well as having the ability to adjust the aperture value, shutter speed and exposure compensation. The Advanced Filter mode offers a choice of 8 different artistic filters. Partial Color filter lets you select from 6 colors (Red, Orange, Yellow, Green, Blue and Purple) and you can preview the effect on the LCD screen before pressing the shutter.



【 Miniature 】
Adds top and bottom blur for a diorama or miniature effect.



【 Dynamic Tone 】
Creates a fantasy effect by dynamically-modulated tonal reproduction.



【 High Key 】
Enhances brightness and reduces contrast to lighten tonal reproduction.



【 Low Key 】
Creates uniformly dark tones with emphasized highlights.



【 Partial Color 】
(Red/Orange/Yellow/Green/Blue/Purple)
Retains one selected original color and changes the rest of the photo to black and white.



【 Soft Focus 】
Creates a look that is evenly soft throughout the whole image.



【 Pop Color 】
Emphasizes contrast and color saturation.



【 Toy Camera 】
Creates shaded borders as if you were taking a photo on a toy camera.

Exposure compensation dial range of ± 3.0 EV

For broader adjustment of exposure, the exposure compensation control offers an expanded range of ± 3.0 EV with the effect reflected in the live view screen. The dial rotation torque has been increased, reducing the risk of unintentional movement of the setting.

Easier-to-use Continuous AF

Focus tracking operates even when the shutter button is half-pressed. It is also possible to use the Focus Lock as before, and to change the setting in the menu. The position of the focus target mark can now be freely selected (Area Selection), and continuous shooting with AF tracking is also possible using the subject motion predictive AF (in Low-speed Continuous Shooting Mode with auto focus set to AF-C).

Enhanced shooting functionality with manual exposure

You can preview your shutter speed and aperture value in the "live" view display in the EVF and on the LCD monitor (PREVIEW EXP. in MANUAL MODE ON/OFF). The HISTOGRAM display also responds with improved accuracy in scenes with more extreme contrast. You can also use the DYNAMIC RANGE AUTO function with manual exposure (with sensitivity restrictions).

Customize ISO AUTO with maximum sensitivity and minimum shutter limits

Under ISO in the Shooting Menu, you can select ISO AUTO and set the default ISO sensitivity, MAX. SENSITIVITY, and MIN. SHUTTER SPEED from an expanded minimum shutter speed range as fast as 1/500 sec.

Select "MULTIPLE EXPOSURE" with the DRIVE button

To immediately switch to Multiple Exposure shooting, just press the DRIVE "shortcut" button and select MULTIPLE EXPOSURE. Other shooting modes that can be smoothly selected in the same way using the DRIVE button include ADVANCED FILTER, CONTINUOUS SHOOTING, BRACKETING, MOTION PANORAMA and MOVIE.

Delete zoomed images during Playback

When checking the focus quality by zooming in on an image in Playback mode, unwanted images can be deleted without first returning to the normal viewing size.

【 X-E2 Evolution: Other Improvements to Explore 】

- 14bit RAW capture enables RAW conversion with richer tonality.
- High precision AF even under low brightness, low contrast, and when horizontal lines are present.
- When shooting with AF, one press of the Command Dial on the back will display the live image to a 4x magnification.
- The "Distance Indicator" display for manual focusing has been redesigned to optimize ease of viewing and prevent it from hindering composition.
- AF-L button (One Touch AF when shooting with Manual Focus mode) is now independent from the AE-L button.
- Simultaneous setting of AE Lock/AF Lock is possible with the AF-L button.
- AE Lock when shooting with manual focusing is possible.
- The determined ISO value is displayed when the AE-L button is pressed.
- With the AE Lock ON, the aperture and shutter speed can be changed while maintaining the exposure.
- User can assign functions to 4 buttons (Fn/Fn2/AE/AF).
- ON/OFF Switch has been made more resistant to prevent unintended powering on of the camera.
- Improved flash pop up mechanism for smoother, stabler deployment.
- Flash adjustment range of ± 2.0 . The compensation value is also displayed in the interface.
- Hold down the MENU button for a few seconds to lock the Selector, AE-L button, and AF-L button.
- When shooting the night sky and other dark scenes, both the LCD and EVF can be turned OFF with activation of only the EVF by the Eye Sensor when looking through the viewfinder.
- "RESET" has been divided into two separate items: Shooting Menu "RESET" and Setup Menu "RESET".

- "Remembers" the last shutter speed setting adjustment made using the menu even after being turned OFF.
- When selecting the AF area, the "BACK" button resets to the default center position, and "OK" confirms the selection.
- Full-screen zoom display when reviewing a vertically-oriented image with the zoom view in playback mode.
- "One Touch" zoom playback of detected faces in Playback mode.
- When IMAGE DISP. is ON, the Eye Sensor will automatically switch the display from EVF to LCD when your eye leaves the EVF.
- Improvement of display speed when advancing frames in the Playback Menu for swift review of high resolution images.
- Addition of "MyFinePix.com" to "MARK FOR UPLOAD TO" in the Playback Menu.
- Terminal compatibility with commercially sold Micro USB (asynchronous)
- Remote release RR-90 (for Micro USB terminal) compatibility

【 Various Shooting Functions 】

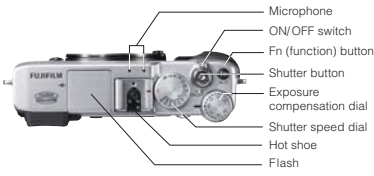
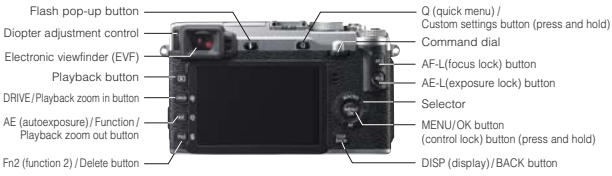
- Selectable AF with a 49-point Metering Matrix
- White Balance Setting
 - Variety of white balance customization methods including color temperature (Kelvin) setting.
 - White Balance Shift for precise white balance setting.
- In-camera RAW Converter
 - Color, Tone & Sharpness Adjustment
 - 2 Types of Color Space
 - Noise Reduction Adjustment
- Selection of Auto Bracketing Functions
 - AE Bracketing
 - ISO Sensitivity Bracketing
 - Dynamic Range Bracketing
 - Film Simulation Bracketing
- Motion Panorama

X-E2 Specifications

Model Name		FUJIFILM X-E2
Number of effective pixels		16.3 million pixels
Image sensor		23.6mm x 15.6mm (APS-C) X-Trans II CMOS with primary color filter Total number of pixels: 16.7 million pixels
Sensor cleaning system		Ultra sonic vibration
Storage media		SD memory card / SDHC memory card / SDXC (UHS-I) memory card *
File format	still image	JPEG (Exif Ver 2.3 **), RAW (RAF format), RAW+JPEG (Design rule for Camera File system compliant / DPOF-compatible)
	movie	Movie file format: MOV, Movie video compression: H.264, Audio: Linear PCM stereo
Number of recorded pixels		L: <3.2> 4896 x 3264 <16.9> 4896 x 2760 <1.1> 3264 x 3264 M: <3.2> 3456 x 2304 <16.9> 3456 x 1944 <1.1> 2304 x 2304 S: <3.2> 2496 x 1664 <16.9> 2496 x 1408 <1.1> 1664 x 1664 <Motion Panorama> L Vertical: 2160 x 9600 Horizontal: 1440 x 9600 M Vertical: 2160 x 6400 Horizontal: 1440 x 6400
Lens mount		FUJIFILM X mount
Sensitivity		AUTO (Control available up to ISO6400) Equivalent to ISO 200 - 6400 (Standard Output Sensitivity) Extended output sensitivity: Equivalent to ISO 100, 12800 and 25600
Exposure control		TTL 256-zone metering, Multi / Spot / Average
Exposure mode		Programmed AE, Shutter priority AE, Aperture priority AE, Manual exposure
Exposure compensation		-3.0EV - +3.0EV, 1/3EV step (movie recording: -2.0EV - +2.0EV)
Image Stabilizer		Supported with OIS type lenses
Face detection		Yes
Shutter type		Focal Plane Shutter
Shutter speed		(P mode) 1/4 sec. to 1/4000 sec., (All other modes) 30 sec. to 1/4000 sec. Bulb (max.60 min.) Time 1/2 to 30 sec. Synchronized shutter speed for flash: 1/180 sec. or slower
Continuous shooting		Approx. 7.0 fps (JPEG: max. 28 frames, RAW/RAW+JPEG: max. 8 frames) Approx. 3.0 fps (JPEG up to the capacity of the card, RAW/RAW+JPEG: max. 8 frames) *Use a card with SD Speed Class with "CLASS 10" or higher. *The frame rate varies with shooting conditions and the number of images recorded.
Auto bracketing		AE Bracketing (±1/3EV, ±2/3EV, ±1EV) Film Simulation Bracketing (Any 3 types of film simulation selectable) Dynamic Range Bracketing (100%, 200%, 400%) ISO Sensitivity Bracketing (±1/3EV, ±2/3EV, ±1EV)
Focus	mode	Single AF / Continuous AF / MF Distance Indicator
	type	Intelligent Hybrid AF (TTL contrast AF / TTL phase detection AF), AF assist illuminator available
	AF frame selection	Area (EVF/LCD: 49 areas with 7x7) Multi *Changeable size of AF frame: among 5 types
White balance		Auto / Custom / Color temperature selection(K) / Preset (Fine / Shade / Fluorescent light (Daylight) / Fluorescent light (Warm White) / Fluorescent light (Cool White) / Incandescent light / Underwater
Self-timer		10 sec. / 2 sec. delay
Flash		Manual pop-up flash (Super Intelligent Flash) Guide number: approx 7 (ISO200 • m)

*1 Please see the Fujifilm website to check memory card compatibility. *2 Exif 2.3 is a digital camera file format that contains a variety of shooting information for optimal printing. *3 Digital Split Image™ is a trademark or a registered trademark of FUJIFILM Corporation.
*4 OS compatibility Viewer software: Windows 8/7/Vista/XP, RAW File Converter: Windows 8/7/Vista/XP, Mac OS X 10.6-10.8

Flash modes		Red-eye removal OFF: Auto/Forced Flash/Slow Synchro/Rear-curtain Synchro/Commander Red-eye removal ON: Red-eye Reduction Auto/Red-eye Reduction & Forced Flash/Red-eye Reduction & Slow Synchro/Red-eye Reduction & Rear-curtain Synchro/Commander *Red-eye removal is active when Face Detection is set to ON.
Viewfinder		0.5-in., approx.2,360,000-dot OLED color viewfinder Coverage of viewing area vs. capturing area: approx. 100% Eye point: approx. 23 mm Diopter adjustment: -4m ⁻¹ to +2m ⁻¹ Built-in eye sensor
Hot shoe		Yes (Dedicated TTL Flash compatible)
LCD monitor		3.0-in. aspect ratio 3:2, approx. 1,040K-dot, color LCD monitor (Approx. 100% coverage)
Movie recording		1920x1080 60p/30p Continuous recording: up to approx. 14 min. 1280x720 60p/30p Continuous recording: up to approx. 27 min. *Use a card with SD Speed Class with "CLASS 10" or higher.
Film Simulation mode		10 types (PROVIA/STANDARD, Velvia/VIVID, ASTIA/SOFT, PRO Neg. HI, PRO Neg. Std, MONOCHROME, MONOCHROME+Ye FILTER, MONOCHROME+R FILTER, MONOCHROME+G FILTER, SEPIA)
Dynamic range setting		AUTO(100-400%)/ 100% / 200% / 400%
Advanced filter		Toy camera / Miniature / Pop color / High-key / Low-key / Dynamic tone / Soft focus / Partial color (Red / Orange / Yellow / Green / Blue / Purple)
Other photography functions		Auto Red-eye Removal, Setting (Color, Sharpness, D-range, Gradation), Select custom setting, Motion panorama, Color space, Framing guideline, Frame No. memory, Histogram display, Preview depth of focus, Lens Modulation Optimizer, Pre-AF, Focus check, Focus Peak Highlight, Digital Split Image *, Electronic level, Multiple exposure, Fn button setting (RAW, Movie, etc.)
Playback functions		RAW conversion, Image rotate, Red-eye reduction, Photobook assist, Erase selected frames, Image search, Multi-frame playback (with micro thumbnail), Slide show, Mark for upload, Protect, Crop, Resize, Panorama, Favorites
Wireless transmitter	standard	IEEE 802.11b/g/n (standard wireless protocol)
	access mode	Infrastructure
Wireless function		Geotagging, Wireless communication (Image transfer), View & Obtain Images, PC Autosave
Other functions		PictBridge, Exif Print, Language selection, Time difference, High Performance mode, Silent mode
Terminal	Digital interface	USB 2.0 High-Speed: *Connectable with Remote Release RR-90 (sold separately)
	HD output	HDMI mini connector (Type C)
	Others	Microphone/shutter release input: ø2.5mm, stereo mini connector
Power supply		NP-W126 Li-ion battery (included)
Dimensions		129 (W) mm x 74.9 (H) mm x 37.2 (D) mm / 5.1 in. (W) x 2.9 in. (H) x 1.5 in. (D) (Minimum depth: 30.9mm / 1.2 in.)
Weight		Approx. 350g / 12.3 oz. (including battery and memory card) / Approx. 300g / 10.6 oz. (excluding accessories, battery and memory card)
Operating Temperature		0°C - 40°C
Operating Humidity		10 - 80% (no condensation)
Battery life for still images		Approx. 350 frames (When XF35mmF1.4 R is set)
Battery life for movies		Single consecutive movie: approx. 110 min. (Face detection is set to OFF)
Starting up period		Approx. 0.5 sec. when High Performance mode set to ON Approx. 0.92 sec. when High Performance mode set to OFF *Equipped with XF27mmF2.8. FUJIFILM Research
Accessories included		Li-ion Battery NP-W126, Battery Charger BC-W126, Shoulder strap, Body cap, Metal strap, Protective cover, Clip attaching tool, CD-ROM (Viewer software, RAW File Converter etc. **), Owner's manual



For more information, please visit our website:

<http://fujifilm-x.com/x-e2/>

Sample photos in this catalog are simulated images.

Microsoft, Windows and Windows logo are trademarks, or registered trademarks of Microsoft Corporation in the United States and/or other countries.
Macintosh and Mac OS are trademarks of Apple Computer, Inc., registered in the U.S. and other countries.
HDMI, the HDMI Logo, and High-Definition Multimedia interface are either trademarks or registered trademarks of HDMI Licensing.
SDXC logo is a trademark. All other trademarks are the property of their respective holders.
SILKYPIX® is a registered trademark of Ichikawa Soft Laboratory Co., Ltd. in Japan.



Specifications are subject to change without notice.